

WELL DRILLING  
PUMP · CONTROLS  
SALES & SERVICE

ST. PAUL, OR  
(503) 633-2666



SINCE 1945  
OR CCB: 39265  
WA UBI: 600202757

RICHLAND, WA  
(509) 943-0331

## QUALIFICATIONS

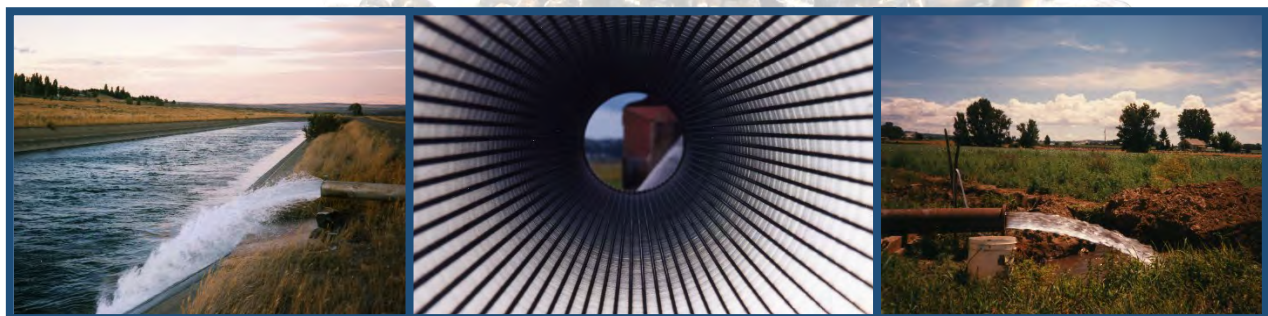
Schneider Water Services (SWS) is a third generation firm started by Milo and Rita Schneider in 1945. SWS employs approximately 25 full time employees with over 200 years of combined water related experience. SWS currently employs six full time drillers with licenses in Oregon, Washington and Idaho, with over 100 years drilling experience. Additional credentialed employees include:

- Supervisor & Journeyman Electricians
- Licensed Pump Installers
- Licensed Specialty Plumbers

SWS is owned and managed by Kriss, Pat, and Eric Schneider. Kriss (B.S. in Business Management & Organizational Leadership, George Fox University) and Pat (B.S. in Business Management, George Fox University) head up the sales and service division. They specialize in pump sales & service, controls, and water treatment sales & service. Eric (B.S. in Information Technology, University of Phoenix) oversee SWS's drilling division and coordinate projects related to well drilling, abandonment, and repair. They also manage specialty-drilling projects such as elevator jack holes and geotechnical holes.

SWS has the tools and equipment to support its services and staff, including:

- AirShock Impulse Generator
- Drill rigs up to 250,000 pound hook load
- Pump hoists up to 140,000 pound hook load
- Down-Hole Color Video Cameras including 360° side view, tilt & zoom



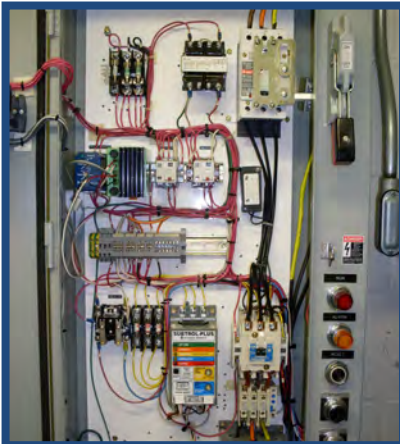
[SCHNEIDERWATER.COM](http://SCHNEIDERWATER.COM)

*"Serving the water needs of the Northwest since 1945"*



**SERVICES**

- **Well Drilling**
  - Reverse Circulation
  - Mud Rotary
  - Air Rotary
  - Cable Tool
- **Well Services**
  - Impulse Generator Development
  - Mechanical/Chemical Rehabilitation
  - Decommissioning/Abandonment
- **Pumps**
  - Submersible
  - Line-shaft Turbine
  - Centrifugal
  - Specialty
- **Electric**
  - Variable Frequency Drives (VFDs), Soft & Full Voltage Starters
  - Custom Controls
  - ETL Panel Shop
- **Machine shop**
  - Complete Pump Repair
  - Custom Machining & Fabrication
- **Other**
  - Turn-Key Systems
  - Water Treatment Systems
  - Test Pumping up to 900 HP



**MARKETS**

- Municipal
- Industrial
- Irrigation
- Domestic

**[SCHNEIDERWATER.COM](http://SCHNEIDERWATER.COM)**

*“Serving the water needs of the Northwest since 1945”*